



Colt Cowls
Chimneys Terminals Flues



Colt Cowls + Flues

2019



Trade Terms Booklet available 01243 781 559

*See back cover

The original

The Colt Cowl range of products has been solving chimney problems since 1931 when the original Colt Cowl was first introduced.

The market leading range comes with the following benefits;

- The highest quality chimney cowls available
- Free next day delivery anywhere in mainland UK (does not include islands or Scottish Highlands)
- Competitive prices
- Technical back up from expert sales team and over 80 years experience of making Colt Cows
- Constant development of new and exciting product ranges

The Colt Cowl range really does provide the best quality and value offer available for trade and domestic customers.

Quality guaranteed



Because Colt Cows have been making chimney cowls for over 80 years, you can be sure our offer has stood the test of time!

Most Colt Cowl products are manufactured from high quality aluminium alloy and stainless steel. Colt Cowl products have been designed to withstand normal operating temperatures in chimney flues. Since 1931, millions of Colt Cowl products have been installed.



Colt Cows Quality Mark

Only where you see a holographic version of this logo can you be sure that you are buying genuine Colt Cows.

Flexiwall™ Chimney Liner

Flexiwall™ chimney liner is one of the best quality chimney liners on the market. The 904/904 version is offered with a 35 year warranty, and the 316/316 version 20 years highlighting the manufacturers commitment to quality and sales back up.

The interior of the liner is widely believed to be the smoothest available on the market providing clear passage for smoke and flue gases from solid fuel and wood burning appliances.

The even inside surface means that there is far less likelihood of soot deposit build up which can create acidic erosion of the stainless steel. Many inferior quality chimney liners suffer from this problem.

The chimney liner is manufactured in such a way that it is both flexible and strong. Presented alongside Colt Cows wide selection of chimney liner components, customers can be certain they are purchasing products that are built to last.

- Compliant with BSEN1856-2:2009 and BSEN 1443:2003
- Next day delivery
- HETAS listed

Page 18



Money Back Guarantee



On certain products an unconditional Money Back Guarantee is offered. Experience has shown that only in isolated cases will our product range fail to solve the problem encountered. If, having installed the product correctly, the problem still remains, simply return it to the place of purchase within a reasonable period, with full proof of purchase, for a full refund.

The MBG applies to all products with the MBG symbol displayed. This guarantee will not apply where a product has been subjected to temperatures in excess of the recommended operating temperature and where excessive wind speeds are experienced. This offer does not affect your statutory rights.

Next day delivery*

Order code	Reference	Size mm	£X.XX
------------	-----------	---------	-------

Any item highlighted in orange is always stocked in our warehouse for next day delivery (does not include islands or Scottish Highlands).

Delivery charges apply to orders of flexible flue liner.

Electric Chimney Fans



New!

The Drafftbooster reduces the difficulties people sometimes face in attempting to light a stove that suffers from a lack of draw.

Page 12

New from Colt Cows – the Drafftbooster

Static Anti-downdraught Cowls

3-4

Colt Top, Colt Top Trade & Colt Top 2



First introduced into the UK in 1985 the Colt Top is the most popular selling chimney cowl in the UK. Comes fully assembled in new packaging ideal for display purposes. Available for gas and solid fuel applications.

5-6

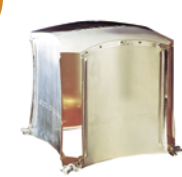
Econocowls®



New from Colt Cows is the Econocowl®. Constructed entirely from stainless steel this durable anti-downdraught cowl comes complete with 25mm square solid fuel mesh.

6

The Original Colt Cowl

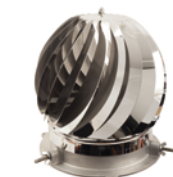


Still available since its invention and introduction in 1931, the Colt Cowl has been used in millions of installations. Comes with traditional money back guarantee.

Revolving Anti-downdraught cowls

8

Rotorvent Turbolite®



A lighter, more aero dynamic, more efficient version of the original Rotorvent® complete with FREE strap fixing kit.

9

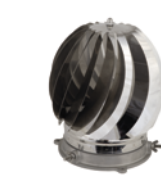
Rotorvent Ultralite 2®



The Rotorvent Ultralite 2® is an extremely competitively priced, high quality revolving chimney cowl which can lay claim to being the lightest revolving cowl on the market.

10

Mini Rotorvent®



The Mini Rotorvent® has almost identical specifications as the Rotorvent® with the exception of size. The Mini Rotorvent® is designed to fit smaller flues and is also suitable for use on landfill sites and methane vent pipes.

11

Rotorvent® accessories



A range of accessories for use with Rotorvents® and Turbolites including opening kits, oversize pot adapters, reduction plates, square adapters and many more.

12

Electric Chimney Fans – The Drafft Booster



The Drafftbooster eliminates the difficulties people sometimes face in attempting to light a stove that suffers from a lack of draw.

13

High Top



Hugely popular, great value birdguard range available in solid fuel, gas and stainless steel for use when stopping bird, animal and water ingress.

14-15

Birdguards & Rain Tops



Large range of birguards, and bird repelling systems suitable for use on a variety of applications. Spark arrestor for use on thatched roofs also available.

Chimney Liner

16

High Top Flex & Star Flex adapter



A revolutionary method for installing High Tops onto flexible flue liner negating the removal of the chimney pot when installing.

17

Colt Top Flex & Star Flex adapter



The most popular anti-downdraught cowl on the market, the Colt Top is now available as a stainless steel chimney liner cowl.

18

flexiwall™ Chimney Liner



A high quality Class 1 Stainless Steel flexible flue liner.



19

Turner & Wilson Twinflex Chimney Liner



Established in 1964 Turner & Wilson flue liners are regarded as the benchmark of quality for lining chimneys. Full range available from Colt Cows.



20-23

Chimney Liner components & accessories



A vastly expanded range of component parts used for the installation of the flue liners.

Stove Pipe

24-25

Vitreous Enamel Flue Pipe Stainless Steel Flue Pipe



A full range of vitreous enamel and Stainless Steel flue pipes for use in conjunction with stoves, flexible flue liner and twin wall flues.



Colt Top

Colt Tops work on the same principle as Colt Cowls but with increased efficiency as their circular shape creates lift whichever direction the wind is blowing, eliminating draught. Rain drains help divert water outside the chimney pot.

Colt Top All Purpose, Gas, Trade and Colt Top 2's have been tested to and under the test conditions of BSEN 16475-7:2016 & BSEN-1856-1:2003.

Fuel Type Chart - Colt Top					
	Coal	Wood	Gas	Oil	Smokeless Fuels
Colt Top Aluminium	✓*	✓*	✓	✓	
Colt Top Brown	✓*	✓*	✓	✓	✓
Colt Top Trade	✓	✓		✓	✓

* recommend removing integral birdguard



FREE display stand with orders of 12 Colt Tops and over

Colt Top Trade

Solid fuel only



Order code	Reference	Size mm	£
CTAP0001T	Colt Top Trade	125-250	57.48

As Colt Top All Purpose but WITHOUT integral stainless steel birdguard and display packaging.

- Suitable for solid fuel only
- Hook bolt fixing only
- Tested to BSEN 16475-7:2016 & BSEN-1856-1:2003

New low price!



Colt Top All Purpose



Tested to BSEN 16475-7:2016

Order code	Reference	Size mm	£
CTAP0001	Colt Top All Purpose	125-250	85.84
CTGABF01	Colt Top AP Buff	125-250	85.84

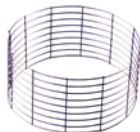
- As Colt Top Gas – but additionally with:
- Painted finish which is highly resistant to corrosive effects of smokeless fuels
 - Suitable for all fuels
 - Optional strap fixing in stainless steel
 - Tested to BSEN 16475-7:2016 & BSEN-1856-1:2003
 - Reduces rain entry



Also available in buff
Order code CTGABF01



Stainless steel hook bolts and wing nuts



Integral birdguard



Strap fixing kit

Now included

Colt Top Gas



Order code	Reference	Size mm	£
CTGA0001	Colt Top Gas	125-250	68.65

- Static cowl in aluminium
- Stainless steel hook bolts and wing nuts
- Tested to BSEN 16475-7:2016 & BSEN-1856-1:2003
- Fully assembled
- No special tools needed
- Effective when wind blows from any direction
- Unconditional Money Back Guarantee
- Withstands flue temperatures up to 200°C
- 135mm height x 435mm width
- For use with most fuel types (see chart)
- Optional strap fixing in stainless steel

Colt Top 2

Colt Top 2 All Purpose

Shown with strap fixing

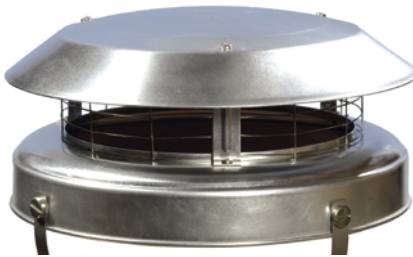


Tested to BSEN 16475-7:2016



Colt Top 2 Gas

Shown with strap fixing



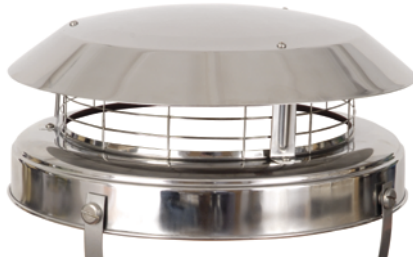
Order code	Reference	Size mm	£
CTALS2002	Colt Top 2 Aluminium (Strap Fix)	170-250	47.30

Manufactured from 1.6mm aluminium the Colt Top 2 Aluminium is supplied in natural form and can be used with the fuels shown in the chart.

- Fits all flue sizes 125-250mm
- Unconditional money back guarantee
- Ready assembled with stainless steel birdguard installed for fast fixing – no tools required
- For temperatures up to 200°C
- Strap fixing in stainless steel
- Stainless steel mesh birdguard
- Tested to BSEN 16475-7:2016 & BSEN-1856-1:2003

Colt Top 2 Stainless Steel

Shown with strap fixing



Order code	Reference	Size mm	£
CTSS2002S	Colt Top 2 Stainless (Strap Fix)	170-250	92.98

- The Colt Top 2 is now available in high quality stainless steel finish
- Money back guarantee
- With strap fixing
- Suitable for all fuels
- Highly durable
- Tested to BSEN 16475-7:2016 & BSEN-1856-1:2003

Order code	Reference	Size mm	£
CTBR2002T	Colt Top 2 Brown (Bolt)	125-250	55.18
CTBRS2002	Colt Top 2 Brown (Strap)	170-250	55.18

Ideal for use with any fuel type and designed to match the majority of terracotta chimney pots. Corrosion resistant.

As Colt Top 2 Gas – but additionally with:

- Painted finish which is highly resistant to the corrosive effects of smokeless fuels
- Suitable for all fuels
- Optional strap fixing in stainless steel
- Maximum outside diameter of pot: 285mm
- Tested to BSEN 16475-7:2016 & BSEN-1856-1:2003



Shown with bolt fixing

Fuel Type Chart - Colt Top 2

	Coal	Wood	Gas	Oil	Smokeless Fuels
Colt Top 2 Aluminium	✓*	✓*	✓	✓	
Colt Top 2 Brown	✓*	✓*	✓	✓	✓
Colt Top 2 Stainless Steel	✓*	✓*	✓	✓	✓

* recommend removing integral birdguard



Sales: 01243 781 559

Dimensions given refer to internal diameter of pot or flue
All prices exclude VAT
Minimum carriage paid order £60

www.coltcowls.co.uk



Colt Cowls
Chimneys Terminals Flues



Tested to BSEN 16475-7:2016

All stainless steel

Order code	Reference	Size mm	£
ECONC001	Econocowl	170-250	32.82

New from Colt Cowls is the Econocowl®. Constructed entirely from stainless steel this durable anti-downdraught cowl comes complete with 25 mm square solid fuel mesh.

- Highly competitively priced
- Constructed from high quality stainless steel
- All fixings stainless steel
- Comes complete with a strapping kit
- Suitable for use on all solid fuels including coal, wood, oil and smokeless fuels (eg anthracite, furnacite etc)
- Tested to BSEN 16475-7:2016

Fuel Type Chart	Coal	Wood	Gas	Oil	Smokeless Fuels
Econocowl	✓	✓		✓	✓



Overdose Pot Adapter



Order code	Reference	Size mm	£
CCOSA001	Pot Adapter (Flat Top)*		92.88
CCOSA002	Pot Adapter (Flanged Top)†		92.88

Optional overdose adaptor for use with large chimney pots and flues.

- Can fit chimney pots with an outside diameter of 390mm
- Can be used in conjunction with Colt Top, High Top and Rotorvent® range
- Stainless steel strap fixing kit
- Painted finish which is highly resistant to the corrosive effects of smokeless fuels
- Painted terracotta finish blends in well with roof top colours

* Flat Top fits Colt Top and Rotorvent® range
† Flanged Top fits Colt Top 2, High Top Birdguard range and Top Lid

Colt Top Reduction Plate



Order code	Reference	Size mm	£
CTAD0100	Adapter	100	6.70
CTAD0125	Adapter	125	6.70
CTAD0150	Adapter	150	6.70
CTAD0175	Adapter	175	6.70
CTAD0200	Adapter	200	6.70

An accessory for use with Colt Tops when the flue dimension is between 125-175mm.

- 1.0mm aluminium
- Pre-drilled for easy installation to Colt Top
- Allows Colt Tops to meet gas regulations

Colt Cowl Universal Strap Fixing Kit



Order code	Reference	£
CCUSFK010	Strap Fix	14.03

- Suitable for use on most products in Colt Cowl range
- High quality stainless steel
- Delivered in packs of 10



Tested to BSEN 16475-7:2016

Order code	Reference	Size mm	£
ECONT001	Econotop	150-250	31.80

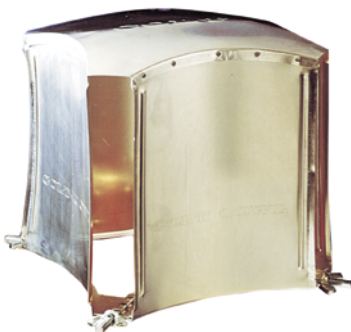
The Econotop® is a brand new addition to the anti-downdraught Colt chimney cowl range. As well as helping to stop smokey fireplaces, the Econotop® helps protect against bird and animal entry as well as rain ingress.

- Stops smokey fireplaces, eliminates bird entry and helps reduce rain ingress in chimneys
- Comes complete with strap fixing kit
- Suitable for all fuels. Leave mesh in for gas applications, remove for solid fuels
- Tested to BSEN 16475-7:2016
- Low price

Fuel Type Chart	Coal	Wood	Gas	Oil	Smokeless Fuels
Econotop	✓*	✓*	✓	✓	✓

* recommend removing integral birdguard

Colt Cowl Natural



The Colt Cowl uses aerodynamic principles to create lift at the top of the chimney as air moves over it. This effect cures downdraught and shifts residual fumes and has been used in more than 3 million installations.

Order code	Reference	Size mm	£
CCNA0001	Colt Cowl	150-250	72.00

- 1.0mm aluminium
- Easy fixing with tried and tested hook bolts
- No tools required to fit
- Withstands flue temperatures up to 200°C
- Maintenance free
- 285mm height, width 310mm
- One size fits all flue sizes between 150-250mm
- Steel hook bolts electro plated

Colt Cowl Universal Opening (and in stainless steel)



Colt Cowl Universal Opening with top removed



Colt Cowl Universal Opening in stainless steel

Order code	Reference	Size mm	£
CCTOP0001	Colt Cowl Universal Opening	150-250	81.75
CCTOPSS01	Colt Cowl Universal Opening stainless steel	150-250	93.49

The Colt Cowl Universal Opening is a traditional Colt Cowl which has been modified to include a top opening system. The Colt Cowl Universal has all the same specifications as the original Colt Cowl with the following features in addition.

- Now available in stainless steel
- Removable top opening cap to enable chimney to be swept from the top down.
- Durable stainless steel wingnut fixings for opening
- Integrated handle on opening cap for ease of use
- 4 integral stainless steel birdguards

- Black corrosion resistant finish on original model
- Suitable for all types of fuel
- One size fits all flue sizes between 150-250mm

Fuel Type Chart	Coal	Wood	Smokeless Fuels
Colt Cowl Natural	✓	✓	
Colt Cowl Universal	✓*	✓*	✓

* recommend removing integral birdguard





Tested to BSEN 16475-7:2016

The Rotorvent® range is widely regarded as the highest quality range of revolving chimney cowls available in the UK. The original Rotorvent® was introduced in 1997, and since that time the range has expanded to incorporate the many technical breakthroughs there have been in both design and manufacture.

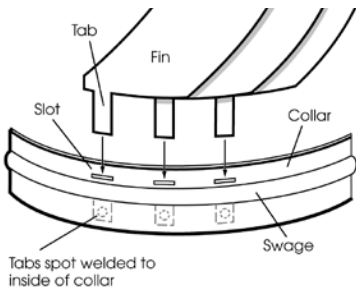
The Rotorvent® offering now comprises the new lower cost, lighter weight Rotorvent® Ultralite 2, and the tried and tested market leading Rotorvent® Turbolite.

Performance

All Rotorvent® products have been designed with over 80 years experience of the aerodynamics of chimney cowls. The original Rotorvent® was developed with one prime objective:- to be the most efficient and powerful product on the market. This purpose has never been forgotten. In fact, we are so confident of the Rotorvent® range that all products within it are offered with the well known Colt Cowl unconditional money back guarantee.

All Rotorvent® products continue to be made using the unique fin fixing system introduced over a decade ago. This system ensures that the blades of the fin stay where they should. External welding or riveting of the fins has proven in the past to have failed, and so all Rotorvents® use centrifugal forces to their advantage. As the cowl accelerates, the tabs are forced inside the collar, putting no pressure whatsoever on the weld and indeed strengthening the structure.

Unique Fin Fixing System



Rotorvents tested to BSEN 16475-7:2016



Examples of Test Certificates

Fuel Type Chart					
	Coal	Wood	Gas	Oil	Smokeless Fuels
Turbolite	✓	✓	✓	✓	✓
Ultralite 2	✓	✓	✓	✓	✓
Mini Rotorvent®	✓	✓	✓	✓	✓

The burning of wet or unseasoned wood must be avoided when using revolving cowls



Dimensions given refer to internal diameter of pot or flue
All prices exclude VAT
Minimum carriage paid order £60

Rotorvent Turbolite®

This relatively new revolving cowl is lighter, more aerodynamic and more efficient than the original Rotorvent® and now comes with an additional strap fixing kit included.

The same high specifications that made the original Rotorvent® such a popular product are included in this product as standard. Fins are made from stainless steel, and the same fin fixing method which has been tried and tested for many years is still utilised.

The main benefits of the Rotorvent Turbolite® can be seen on the base of the product. The base is made from pressure die cast aluminium affording a strong and durable finish. The base is 30% lighter than the original Rotorvent® whilst maintaining its strength. The rounder, thinner and more aerodynamically designed legs help achieve a greater flow of gases through a larger area making the performance altogether superior. Tests indicate that the Turbolite provides even better performance than the original Rotorvent®.

Above all these benefits the Turbolite comes complete with 2 fixing methods. The time honoured hook bolt is still the preferred method of fixing Rotorvents®, but included with the Turbolite is a strap fixing kit. Hook Bolts can be tightened in the same way but there is now the option of the strap fixing kit as well for extra security in areas of the country with very high wind speeds. The legs simply attach underneath the wingnut, drop down the outside of the chimney pot or flue where the jubilee clip is then fastened.

Order code	Reference	Size mm	£
CCRVL250	Turbolite	80 - 250	210.40

- Lightweight
- Better performance
- Improved aerodynamics
- Tested to BSEN 16475-7:2016 & BSEN-1856-1:2003
- Comes complete with strap fixing kit option as well as hook bolts
- Money back guarantee
- For areas of consistently high wind speeds a static chimney cowl such as the Colt Top (page 3) may be more appropriate
- Stainless steel
- Suitable for smokeless fuels

The burning of wet or unseasoned wood must be avoided when using revolving cowls



Suitable for use on smokeless fuels

Tested to BSEN 16475-7:2016



Now includes additional strap fixing kit!



Turbolite packaging

Base of the Turbolite showing greater surface area through which gasses may pass





Tested to BSEN
16475-7:2016

The Rotorvent Ultralite® 2 is an extremely competitively priced, high quality revolving chimney cowl which can lay claim to being the lightest revolving cowl on the market.

Weighing under 2kg, it is an amazing 40% lighter than the original Rotorvent®. This makes the product even more ideal for additional applications such as installation on top of methane vents as well as traditional flues and chimney pots.

Yet another technical breakthrough by Colt Cowls has meant that the Ultralite® revolving cowl is made substantially from aluminium.

- Fits 80–250mm flue sizes*
- Comes complete with strap fixing kit
- Ultra light weight
- Highly aerodynamic pressure die cast aluminium base

- New black powder coated finish which is highly resistant to corrosive effects of smokeless fuel
- Rotor bowl now made from 1.2mm aluminium
- For areas of consistently high wind speeds a static chimney cowl such as the Colt Top (page 3) may be more appropriate
- Money back guarantee
- Traditional Rotorvent® fin fixing method which combines threading the fin through the base of the structure and finishing with spot welding (see diagram)
- Tested to BSEN 16475-7:2016 & BSEN-1856-1:2003
- Does not require a birdguard
- Highly competitively priced

*80–160mm requires hook bolts, supplied separately

Rotorvent Ultralite® 2

Order code	Reference	Size mm	£
CCRVA250T	Ultralite 2	80–250*	103.46

Fuel Type Chart

	Coal	Wood	Gas	Oil	Smokeless Fuels
Turbolite	✓	✓	✓	✓	✓
Ultralite® 2	✓	✓	✓	✓	✓
Mini Rotorvent®	✓	✓	✓	✓	✓

The burning of wet or unseasoned wood must be avoided when using revolving cowls



Ultralite 2 strap fixing kit and close up

Packaging

The high quality Rotorvent® pack is designed to give maximum protection during transport.



Mini Rotorvent®

Order code	Reference	Size mm	£
CCRV1800	Mini Rotorvent®	80–180	182.19

The Mini Rotorvent® is designed to fit smaller flues and is also suitable for use on landfill sites and methane vent pipes.

- Fits flues 80–180mm flue sizes
- Stainless steel rotor structure
- Pressure die cast aluminium base
- Money back guarantee
- Revolutionary fin-fixing method which combines threading the fin through the collar of the structure and finishing with spot welding (see fin fixing diagram page 7)
- Suitable for use on all fuels
- Stainless steel hookbolt fixings (smaller than Rotorvent®) suitable for use on twin wall flue pipe
- Tested to BSEN 16475-7:2016 & BSEN-1856-1:2003
- For areas of consistently high wind speeds a static chimney cowl such as the Colt Top (page 3) may be more appropriate.



Mini Rotorvent® and Turbolite

Fuel Type Chart

	Coal	Wood	Gas	Oil	Smokeless Fuels
Mini Rotorvent®	✓	✓	✓	✓	✓

The burning of wet or unseasoned wood must be avoided when using revolving cowls



Tested to BSEN
16475-7:2016



Rotorvent® Strap Fixing Kit



Rotorvent® Universal Strap Fixing Kit

Order code	Reference	£
CCUSFK010	Strap Fix	14.03

- Suitable for use on most products in Colt Cowl range
- High quality stainless steel
- Delivered in packs of 10



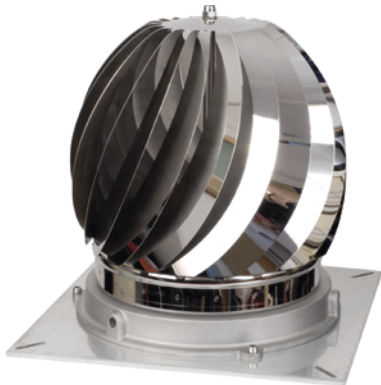
Adapter Kits for Rotorvent®



Square Adapter Plate Components

Order code	Reference	Size mm	£
CCSQAD01	Square Adapter	330 x 330	41.90

- Can be used on difficult installations
- 4 Fixing slots to top of chimney
- Stainless steel fixings to mount Rotorvents® including Allen (hexagon) key
- Dimensions 330mm x 330mm
- Fixings can be secured from 273mm x 273mm up to 310mm x 310mm
- 6mm thick durable aluminium alloy



Rotorvent® with Square Adapter on Chimney



Rotorvent® with Oversize Pot Adapter **See page 5**

Rotorvent® Adapter for Twin Wall Flue



Order code	Reference	Size mm	£
HT0190153	RV Flue Adapter	125	86.60
HT0191153	RV Flue Adapter	150	90.44
HT0190154	Mini RV Flue Adapter	125	86.60
HT0191154	Mini RV Flue Adapter	150	90.44

Another new product from Colt Cows the Rotorvent® adapter plate is a product that appears in the Flue Catalogue as well. Suitable for use on the Holetherm twin wall flue system it comes in sizes 125 and 150mm terminating the flue system and allowing for the installation of an Ultralite 2, Turbolite or Mini Rotorvent on the adapter plate with the use of enclosed bolts and allen key. The Turbolite's hook bolts may also be used as an extra measure.

- For use with Holetherm Twin Wall Flues from Colt Cows
- Comes with fixings for Rotorvent®
- Mini version available

Rotorvent® Opening Kit

Order code	Reference	Size mm	£
CCOU0001	Opening Kit	80-250	50.41

Optional opening kit which fits underneath the Rotorvent® base and allows the product to be opened whilst still fixed to the chimney.

- Simple to fit
- Ensures there is no damage to the Rotorvent® during chimney cleaning
- Suitable for both Turbolite and Ultralite 2.

Rotorvent® Reduction Plate



Rotorvent® Reduction Adapter Plates

Order code	Reference	Size mm	£
CTAD0100	Adapter*	100	6.70
CTAD0125	Adapter*	125	6.70
CTAD0150	Adapter*	150	6.70
CTAD0175	Adapter	175	6.70
CTAD0200	Adapter	200	6.70

An accessory for use with Rotorvent® when the flue dimension is between 125-175mm.

- 1.0mm aluminium
- Gas use only
- Sits between the chimney pot and the Rotorvent®
- For use on the Ultralite 2 and the Rotorvent® Turbolite but not the Mini-Rotorvent®

*See Mini Rotorvent® page 10



Easily installed onto Twin Wall Flue, or lined chimneys



The worlds first 'plug and play' chimney fan also comes complete with remote control

The Draftbooster

New from Colt Cows!
As the name suggests the Draftbooster eliminates the difficulties people sometimes face in attempting to light a stove that suffers from a lack of draw. The Draftbooster provides the necessary draught, making the stove lighting process a cinch whilst reducing the amount of smoke and odours in the room.

The Draftbooster can be used on both brick and steel chimneys with a maximum diameter of Ø220mm. The Draftbooster is therefore predominantly designed for use on wood-burning stoves with lined chimneys. It can be plugged into a standard power socket with earth connection and switched on by remote control which is included!

Order code	Reference	£
DB7B02001	Draftbooster (black)	428.40
DB7S02001	Draftbooster (silver)	428.40



Put an end to smoke filled rooms!

The Draftbooster comes with the following great benefits:

- Adjustable fixings. The Draftbooster will fit both brick and steel chimneys with an internal maximum diameter of Ø220mm
- Less smoke spillage. The Draftbooster draws smoke up and away, minimising soot and smoke in the room
- Better combustion and faster heating. The Draftbooster provides better and cleaner combustion meaning the room warms up quicker
- Plug and play. The Draftbooster is easily installed and is the first 'plug and play' chimney fan worldwide.
- Works up to 250°C just below the chimney fan
- Can be used with woodburning stoves/ fireplace inserts with a rated output of 3 to max 8 (KW)
- All sheet parts are made of stainless steel EN1.4301/AISI304
- Developed according to requirements in PrEN16475-2 (Chimney Fans)



High Top Birdguard Gas



Order code	Reference	Size mm	£
CTHTSGA01	Gas High Top	170-250	41.76

- Fits all flue sizes 170-250mm internal diameter
- For use on gas fires (BS5871)
- Strap fixing
- Corrosion resistant stainless steel mesh birdguard. Same birdguard mesh as Colt Top and Colt Top 2 to meet BS5871 Part 3
- Maximum outside diameter of pot 285mm

High Top Birdguard Stainless Steel (painted)



Order code	Reference	Size mm	£
CTHTSSFSS	Solid Fuel Stainless Steel High Top	170-250	81.22

- Made from durable stainless steel
- For solid fuel
- Fits all flues 170-250mm internal diameter
- Terracotta finish
- Longer lasting material
- Strap fixing
- Stainless steel
- Maximum outside diameter of pot 285mm

High Top Birdguard Solid Fuel

Order code	Reference	Size mm	£
CTHTS0001	High Top	170-250	39.55
CTHTSBF01	High Top (Buff)	170-250	39.55

- The High Top is designed to prevent unwanted bird and animal entry and to reduce the potential for clogging by soot or debris.
- Hugely popular and superb value for money
 - Fits all flues 170-250mm internal diameter
 - 25 mm corrosion resistant mesh
 - Strap fixing
 - Maximum outside diameter of pot 285mm

Fuel Type Chart					
	Coal	Wood	Gas	Oil	Smokeless Fuels
High Top Solid Fuel Birdguard	✓	✓		✓	✓
High Top Gas Birdguard			✓		
High Top Stainless Steel Birdguard	✓	✓		✓	✓

Oversize Pot Adapter



Order code	Reference	£
CCOSA002	Pot Adapter (Flanged Top)*	92.88

- Optional oversize adaptor for use with large chimney pots and flues.
- Can fit chimney pots with an outside diameter of 390mm
 - Can be used in conjunction with High Top range
 - Stainless steel strap fixing kit
 - Painted finish which is highly resistant to the corrosive effects of smokeless fuels
 - Painted terracotta finish blends in well with roof top colours
 - Fits High Top Birdguard range

* Flanged Top fits Colt Top 2, High Top Birdguard range and Top Lid

Dimensions given refer to internal diameter of pot or flue
All prices exclude VAT
Minimum carriage paid order £60

Top Lid 3



Order code	Reference	Size mm	£
CCTLB003	Top Lid	125-250	27.83

- The Top Lid is used to cap off unused chimneys to save heat loss and stop bird and rain ingress.
- Durable steel
 - Terracotta painted finish
 - Fits flue sizes 125-250mm
 - Strap fixing
 - New top cap with improved ventilation

Rain Top



Order code	Reference	Size mm	£
BGRT0201	Earthenware with guard	150-200	30.16

- This general application Rain Top reduces rain entry.
- Strong durable galvanised steel
 - Corrosion resistant painted finish
 - Mesh integral to the product

Fuel Type Chart					
	Coal	Wood	Gas	Oil	Smokeless Fuels
Rain Top - Earthenware	✓	✓		✓	
Square Stainless Steel Birdguard	✓	✓		✓	✓
Econoguard Stainless Steel	✓	✓		✓	✓

Square Birdguard Stainless Steel



Order code	Reference	Size mm	£
SSSQBG01	Square Birdguard Stainless Steel Terracotta	250x250	59.28

- New from Colt Cowls is the square birdguard for use on chimney pots up to 250mm x 250mm. Made entirely from stainless steel and powder coated in terracotta.
- Fits chimney pots up to 250 x 250mm
 - 25mm square birdguard mesh suitable for solid fuels (including smokeless fuels)
 - Comes complete with jubilee fixing strap

New!

Econoguard® Stainless Steel



Order code	Reference	Size mm	£
ECONGSS01	Econoguard Stainless Steel	150-250	39.49

- A high quality, low cost stainless steel birdguard in natural finish.
- Fits up to 250mm internal diameter pots
 - Natural finish
 - Comes complete with jubilee band for fixing to chimney pot or flue
 - Great value birdguard

New!



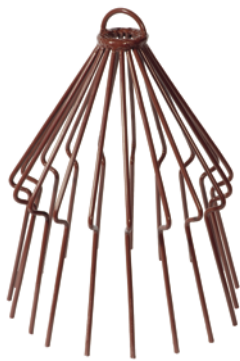
Spark Arrester



Order code	Reference	Size mm	£
CSKA0002	Spark Arrester	125-250	114.06

- Ideal for shingled and thatched properties
- Steel and aluminium construction
- Combined effect of two meshes allows lit debris to self extinguish
- Reduction plate (see page 5) required on small pots ie where pot size is smaller than opening of Arrester

Decorative Chimney Birdguard



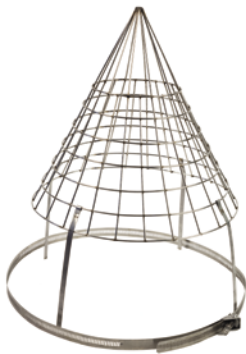
Order code	Reference	Size mm	£
DCBG0002	Earthenware	150-250	21.87

- Ornate birdguard made from steel.
- Hardwearing M10 Steel
 - Painted Finish

Fuel Type Chart

	Coal	Wood	Gas	Oil	Smokeless Fuels
Spark Arrester	✓	✓		✓	✓
Chimney Birdguard	✓	✓		✓	
Decorative Chimney Birdguard	✓	✓		✓	
Cone Top Birdguard	✓	✓		✓	✓
Bucket Top Birdguard	✓	✓		✓	✓

Cone Top Birdguard Stainless Steel



Order code	Reference	Size mm	£
CTBGSSS001	Cone Top	110-260	18.79

- General application ornate cone shaped stainless steel birdguard for use on solid fuel.
- Lightweight and strong
 - Made from durable stainless steel
 - Space saving. Great for installers as they take up very little space when stored in a stock room or van
 - Comes complete with strap fixing kit
 - Mesh suitable for use on solid fuel
 - Can be adapted to smaller and square pots

Bucket Top Birdguard Stainless Steel with Strap

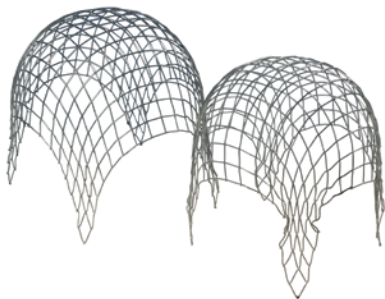


New!

Order code	Reference	Size mm	£
BTBGSSS001	Bucket Top	200-250	18.79

- Durable Stainless Steel birdguard.
- Light weight and strong
 - Space saving. Can be stacked up for easy storage or when transporting
 - One inch mesh suitable for solid fuel
 - Comes with a jubilee band and legs for fixing to chimney pots

Chimney Birdguard



Order code	Reference	Size mm	£
LSCBO200	Birdguard	200	8.19
LSCBO225	Birdguard	225	8.19

- General application birdguard with multi fuel use in galvanised steel.
- Pushes into flue pipe
 - Self adjusts to fit



All stainless steel



Fuel Type Chart

	Coal	Wood	Gas	Oil	Smokeless Fuels
High Top Flex Cowls	✓	✓		✓	✓



High Top Flex

This great new product from Colt Cowls revolutionises the method of installing a cowl or birdguard onto a flexible flue negating the removal of the chimney pot when installing.

- Popular High Top model
- Manufactured entirely from high quality stainless steel
- Connects straight to chimney liner and chimney pot
- Robust base allows product to be easily centred on pot and provides great strength
- Saves time and money
- Strap fixing kits included for connecting to both chimney liner and chimney pot

Order code	Reference	Size mm	£
SHTFT125	High Top Flex Terracotta 125	125mm liner/ 125-250mm pot	66.20
SHTFT150	High Top Flex Terracotta 150	150mm liner/ 125-250mm pot	66.20
SHTFS125	High Top Flex Natural 125	125mm liner/ 125-250mm pot	66.20
SHTFS150	High Top Flex Natural 150	150mm liner/ 125-250mm pot	66.20

Star Flex Adapter - Flexible Flue Liner

The Star Flex adapter is a brand new product which allows chimney liner to be supported from the top of the chimney pot while allowing the installer to be able to backfill with a loose insulation material such as vermiculite around the outside of the liner.

The other advantage to this adapter is that it can be used on its own, or in conjunction with either a standard Colt chimney cowl or a suspending cowl such as the Colt Top Flex or High Top Flex. When installing with a suspending cowl, simply nip off the stainless steel legs on the spigot.

- Constructed entirely from stainless steel
- Easy to fix to liner using robust worm screw arrangement
- Supports liner from the top of the chimney pot
- Allows enough space to pour back fill down the outside of the flue liner
- Fits all flue liners regardless of brand
- Can be used in conjunction with any standard Colt chimney cowl, or suspending cowl such as Colt Top Flex and High Top Flex
- Available for 125 and 150mm liner
- Suitable for chimney pots up to 250mm internal diameter



New!



Order code	Reference	Size mm	£
CCSTA125	Star Adapter 125	125	14.95
CCSTA150	Star Adapter 150	150	14.95



Colt Top Flex

The most popular anti-downraught cowl on the market, the **Colt Top** is now available as a stainless steel chimney liner cowl. The **Colt Top** can now be installed onto flexible flue liner without the need to remove the chimney pot.

- Manufactured entirely from high quality stainless steel
- Connects straight onto chimney liner and chimney pot
- Anti-downraught
- Popular Colt Top model. Approximately one million sold since 1985
- Strap fixing kits included for connecting to both chimney liner and chimney pot
- Saves time and money for installers and home owners
- Excellent at preventing rain entry

Order code	Reference	Size mm	£
CTFT125	Colt Top Flex Stainless Steel (Terracotta)	125mm	88.30
CTFT150	Colt Top Flex Stainless Steel (Terracotta)	150mm	88.30

Star Flex Adapter – Flexible Flue Liner

The **Star Flex adapter** is a brand new product which allows chimney liner to be supported from the top of the chimney pot while allowing the installer to be able to backfill with a loose insulation material such as vermiculite around the outside of the liner.

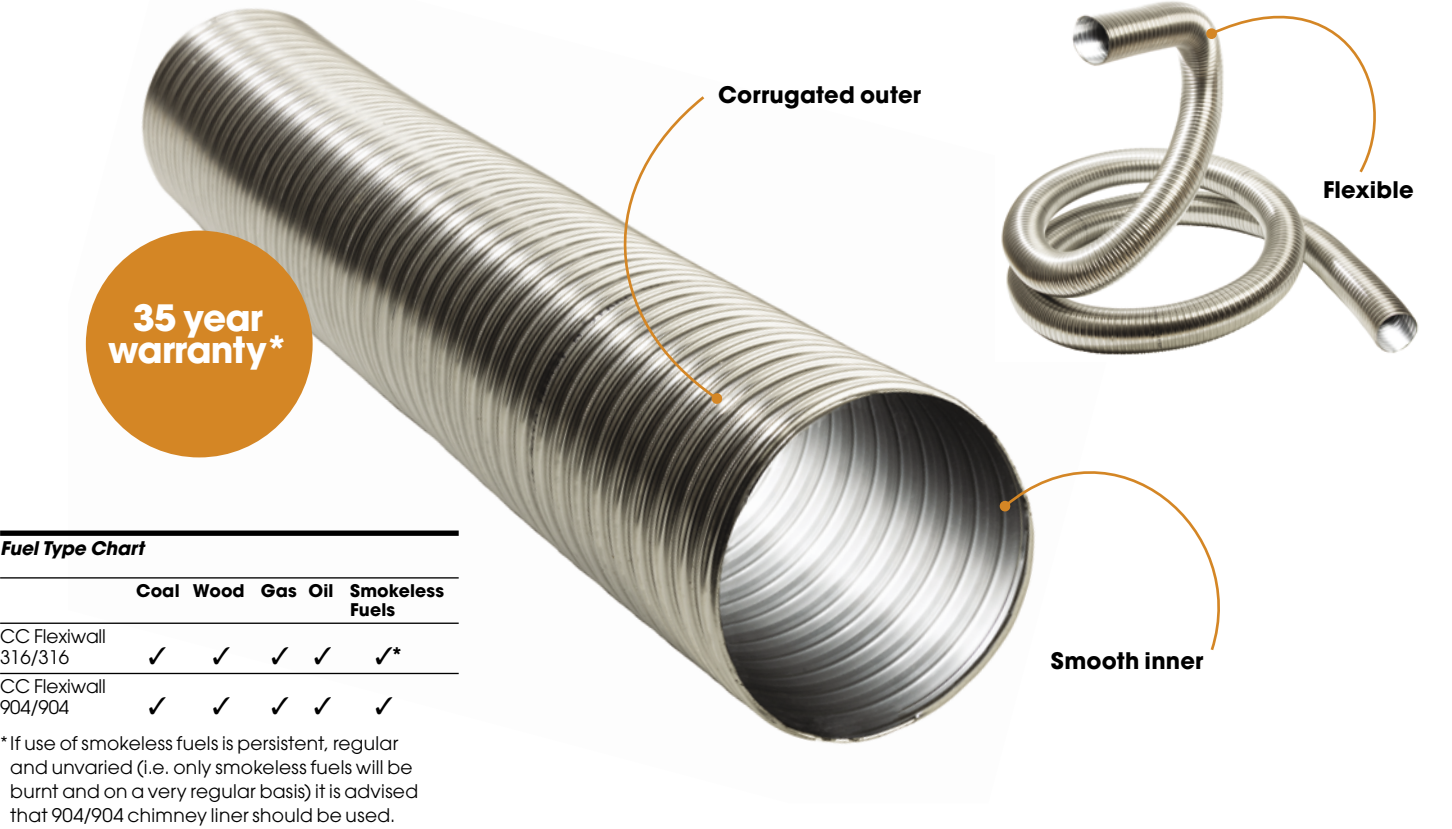
The other advantage to this adapter is that it can be used on its own, or in conjunction with either a standard Colt chimney cowl or a suspending cowl such as the Colt Top Flex or High Top Flex. When installing with a suspending cowl, simply nip off the stainless steel legs on the spigot.

- Constructed entirely from stainless steel
- Easy to fix to liner using robust worm screw arrangement
- Supports liner from the top of the chimney pot

- Allows enough space to pour back fill down the outside of the flue liner
- Fits all flue liners regardless of brand
- Can be used in conjunction with any standard Colt chimney cowl, or suspending cowl such as Colt Top Flex and High Top Flex
- Available for 125 and 150mm liner
- Suitable for chimney pots up to 250mm internal diameter

Order code	Reference	Size mm	£
CCSTA125	Star Adapter 125	125	14.95
CCSTA150	Star Adapter 150	150	14.95

Dimensions given refer to internal diameter of pot or flue
All prices exclude VAT
Minimum carriage paid order £60



Fuel Type Chart					
	Coal	Wood	Gas	Oil	Smokeless Fuels
CC Flexiwall 316/316	✓	✓	✓	✓	✓*
CC Flexiwall 904/904	✓	✓	✓	✓	✓

* If use of smokeless fuels is persistent, regular and unvaried (i.e. only smokeless fuels will be burnt and on a very regular basis) it is advised that 904/904 chimney liner should be used.

Flexiwall™ Chimney Liner

Flexiwall™ chimney liner is one of the best quality chimney liners on the market. The **904/904** version is offered with a **35 year warranty**, and the **316/316** version **20 years** highlighting the manufacturers commitment to quality and sales back up.

The interior of the liner is widely believed to be the smoothest available on the market providing clear passage for smoke and flue gases from solid fuel and wood burning appliances. The even inside surface means that there is far less likelihood of soot deposit build up which can create acidic erosion of the stainless steel. Many inferior quality chimney liners suffer from this problem.

The chimney liner is manufactured in such a way that it is both flexible and strong.

- Presented alongside Colt Cowls wide selection of chimney liner components, customers can be certain they are purchasing products that are built to last.
- Compliant with BSEN1856-2:2009 and BSEN 1443:2003
 - 316/316: T450P2DVML50024G
 - 904/904: T450N2DVM70012G
 - Next day delivery
 - HETAS listed



Flexiwall™ 316/316
Stainless Steel Solid Fuel Liner

Order Code	Reference	Ø mm	Length m	£
CCFS10005	CC Flexiwall™ 316 x 125	125	1.0	22.98
CCFS10006	CC Flexiwall™ 316 x 150	150	1.0	24.98
CCFS10007	CC Flexiwall™ 316 x 175	175	1.0	33.58
CCFS10008	CC Flexiwall™ 316 x 200	200	1.0	37.78

Flexiwall™ 904/904
Stainless Steel Solid Fuel Liner

Order Code	Reference	Ø mm	Length m	£
CCFS10205	CC Flexiwall™ 904 x 125	125	1.0	39.98
CCFS10206	CC Flexiwall™ 904 x 150	150	1.0	45.98
CCFS10207	CC Flexiwall™ 904 x 175	175	1.0	56.68
CCFS10208	CC Flexiwall™ 904 x 200	200	1.0	67.18

Chimney Liner – Gas & Oil

Order Code	Reference	Ø mm	Length m	£
GF10005	Gas & Oil Liner	125	1.0	16.86
GF10006	Gas & Oil Liner	150	1.0	18.75
GF10007	Gas & Oil Liner	175	1.0	24.30
GF10008	Gas & Oil Liner	200	1.0	25.50

NB Orders below 40m are subject to a delivery charge. Orders to postcodes AB IV KW PH BT and to all islands will incur additional delivery charges whether for 1m or 40m

When accessories are ordered in non-pack sizes in conjunction with the liner net prices apply.

*35 year warranty applies to 904/904. 316/316 has a 20 year warranty. Warranty registration required. Delivery charges may apply.

Turner & Wilson Twinflex Chimney Liner

19



See pages 20-23 for our full range of accessories

Turner and Wilson is a brand synonymous with quality and specified by countless professional installers who regard Twinflex as a superb liner and quite simply the best on the market!

Colt Cowls are proud to offer the Turner and Wilson brand because it shares many of the core values Colt Cowls have worked hard to live by over the years. Established in 1964, Turner and Wilson flue liners have, like Colt Cowls (est. 1931) stood the test of time, and there is no greater test than that. The product is manufactured with quality in mind rather than profit, and the robust yet flexible construction gives uncompromisingly, the best possible performance for both installation and use.

- Available in a range of diameters and in both 316/316 and 904/904 stainless steel, Twinflex is offered with NEXT DAY delivery to mainland UK.
- Twinflex has been tested and passed by BSRIA to EN 1856-2 with the designation of T600. N. D3. VmI40010 G(25)
 - Wonderful ability to absorb thermal shock
 - Optimum flexibility for installation.
 - Completely over-lapping inner skin for long life
 - Exceptionally smooth bore
 - High Spring factor for ease of fitting
 - Huge crush and torque resistance
 - HETAS listed



Sales: 01243 781 559

Dimensions given refer to internal diameter of pot or flue
All prices exclude VAT
Minimum carriage paid order £60

Chimney Liner Components – Adapters*

20

Adapter



- High quality stainless steel
- Connects stove pipe to flexible flue liner

Order Code	Reference	Ø mm	£
CCSFFFA125	Stove pipe to flex adaptor (MA)	125	24.34
CCSFFFA150	Stove pipe to flex adaptor (MA)	150	24.34

Increasing adapter



- High quality stainless steel
- Connects smaller diameter stove pipe to larger diameter flexible flue liner

Order Code	Reference	Ø mm	£
CCSFFIA125	Increasing adaptor (MR)	125 – 150	29.34

Screwflex adapter



- High quality stainless steel
- Screws onto flexiwall chimney liner

Order Code	Reference	Ø mm	£
SFA05	Screwflex Adapter	125	35.43
SFA06	Screwflex Adapter	150	35.43

Screwflex increasing adapter



- High quality stainless steel
- Screws onto flexiwall chimney liner. Connects smaller diameter flue to larger diameter flexiwall

Order Code	Reference	Ø mm	£
SFIA05	Screwflex increasing adapter	100–125	47.22
SFIA06	Screwflex increasing adapter	125–150	52.71

Connect adapter



- Connects two pieces of chimney liner together

Order Code	Reference	Ø mm	£
CA1505	Connect adapter	125	47.22
CA1506	Connect adapter	150	56.28

Long Nose adapter



- Longer nose preferred by some installers

Order Code	Reference	Ø mm	£
FAL1305	Long nose adapter	125	48.57
FAL1306	Long nose adapter	150	48.57

*Other components and sizes available upon request

www.coltcowls.co.uk



Colt Cowls
Chimneys Terminals Flues

Chimney Liner Components – Adapters

21

Top Hat adapter



- Allows flexible installation. Attaches to register plate meaning liner can be fitted and stove can be installed at a later date!

Order Code	Reference	Ø mm	£
THA05	Top Hat Adapter	125	76.89
THA06	Top Hat Adapter	150	85.85

Top Hat increasing adapter



- Allows flexible installation. Attaches to register plate meaning liner can be fitted and stove can be installed at a later date!
- Connects smaller diameter flue to larger diameter pipe flexible flue pipe

Order Code	Reference	Ø mm	£
THIA05	Top Hat Increaser	100–125	96.69
THIA06	Top Hat Increaser	125–150	104.64

Register Plate adapter



- Allows flexible installation. Includes register plate meaning liner can be fitted and stove can be installed at a later date!

Order Code	Reference	Ø mm	£
RPA2205	Register Plate adapter	125	78.72
RPA2206	Register Plate adapter	150	78.72

Register Plate increasing adapter



- Allows flexible installation. Includes register plate meaning liner can be fitted and stove can be installed at a later date!
- Connects smaller diameter flue to larger diameter flex

Order Code	Reference	Ø mm	£
RPIA05	Register Plate increasing adapter	125	83.97
RPIA06	Register Plate increasing adapter	150	86.20

*Other installation products such as fire rope, rope adhesive, fire cement and silicone are available when ordering flue liner. Price on Application

Sales: 01243 781 559

Dimensions given refer to internal diameter of pot or flue
All prices exclude VAT
Minimum carriage paid order £60

Chimney Liner Components – Adapters & Register Plates

22

Sump adapter



- Connects stove pipe to the underside of a clay chimney liner
- Top 'plate' part of the adapter measures 310mm

Order code	Reference	Ø mm	£
SFSA05	Sump adapter	125	65.58
SFSA06	Sump adapter	150	70.86

Register Plates



- Seals off chimney opening to prevent dust and debris falling back down into the room

Order code	Reference	Ø mm	£
RP105	Register Plate 300 x 900mm	125	54.58
RP106	Register Plate 300 x 900mm	150	54.58
RP205	Register Plate 450 x 900mm	125	56.68
RP206	Register Plate 450 x 900mm	150	56.68
RP305	Register Plate 600 x 900mm	125	76.63
RP306	Register Plate 600 x 900mm	150	76.63

Gather Unit



- Used at the base of a chimney when an open fire is installed

Order code	Reference	Ø mm	£
GH05	Gather unit 300 x 300mm	125	120.72
GH06	Gather unit 300 x 300mm	150	128.61

Fixing plate & Clamping Bracket



- Used in conjunction with one another
- Fixing plate used at the top of a chimney along with bracket to fix chimney liner in place

Order code	Reference	Ø mm	£
CCSFFFP125	Fixing plate (400mm x 400mm)	125	15.67
CCSFFFP150	Fixing plate (400mm x 400mm)	150	15.67
CCSFFCB125	Clamp	125	7.18
CCSFFCB150	Clamp	150	7.18

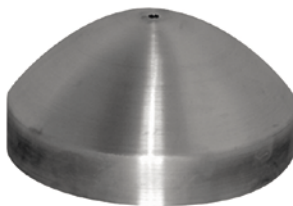
Insert Sleeve



- High quality stainless steel
- Strengthens the top of a chimney liner when attaching the clamping bracket

Order code	Reference	Ø mm	£
CCSFFIS125	Insert Sleeve	125	10.98
CCSFFIS150	Insert Sleeve	150	10.98

Nose Cone



- High quality stainless steel
- Fitted to the end of a chimney liner to protect and guide the liner down the chimney when installing

Order code	Reference	Ø mm	£
CCSFFNC125	Nose cone	125	11.53
CCSFFNC150	Nose cone	150	11.53

www.coltcowls.co.uk



Colt Cowls
Chimneys Terminals Flues

Flexwrap (1,2,3 & 4m lengths)



Flexwrap provides a versatile solution for insulating flexible flue liner when more conventional methods may be impractical.

- Easy to install
- Wraps can be combined together to suit any length of flue
- Includes Velcro fasteners
- Prolongs the life of the flue liner
- Fits 125 & 150mm flue liner

Order code	Reference	Size mm	£
FW101	Flexwrap	125 & 150mm (1m length)	89.60
FW102	Flexwrap	125 & 150mm (2m length)	143.35
FW103	Flexwrap	125 & 150mm (3m length)	201.59
FW104	Flexwrap	125 & 150mm (4m length)	282.22

Vermiculite back fill insulation



Vermiculite back fill has traditionally been used to insulate chimney liner helping to prevent the build up of condensation in the flue. Insulating chimney liner in this way not only helps the chimney work efficiently but also helps to extend the life of the chimney liner.

- High quality back fill insulation
- 100 ltr bag

Order code	Reference	Size mm	£
V100	Vermiculite (Back fill insulation)	100ltr bag	38.75

High Top Flex Stainless Steel (brown)



Order code	Reference	Size mm	£
SHTFT125	High Top Flex 125	125mm liner/ 125-250mm pot	66.20
SHTFT150	High Top Flex 150	150mm liner/ 125-250mm pot	66.20

High Top Flex Stainless Steel (natural)



Order code	Reference	Size mm	£
SHTFS125	High Top Flex Natural 125	125mm liner/ 125-250mm pot	66.20
SHTFS150	High Top Flex Natural 150	150mm liner/ 125-250mm pot	66.20

Colt Top Flex



Order code	Reference	Size mm	£
CTFT125	Colt Top Flex Stainless Steel (Terracotta)	125mm	88.30
CTFT150	Colt Top Flex Stainless Steel (Terracotta)	150mm	88.30

High Top Birdguard Stainless Steel (brown)



Order code	Reference	Size mm	£
CTHTSSFSS	Solid Fuel Stainless Steel High Top	170-250	77.72



Vitreous Enamel Flue Pipe Ø125

Product Code	Description	Material	Ø mm	£
CEPIPE250X5	CE Pipe 250mm x 125mm	SS316	125	37.35
CEPIPE250X5DAMPER	CE Damper Pipe 250mm x 125mm	SS316	125	93.81
CEPIPE500X5	CE Pipe 500mm x 125mm	SS316	125	48.66
CEPIPE1000X5	CE Pipe 1000mm x 125mm	SS316	125	74.73
CEPIPE500X5WD	CE Pipe 500mm x 125mm c/w Door	SS316	125	92.70
CEPIPE1000X5WD	CE Pipe 1000mm x 125mm c/w Door	SS316	125	119.34
CEBENDND45X5	CE Bend 45° x 125mm (No Door)	SS316	125	77.04
CEBENDWD45X5	CE Bend 45° x 125mm c/w Door	SS316	125	121.92
CEBENDND90X5	CE Bend 90° x 125mm (No Door)	SS316	125	77.04
CEBENDWD90X5	CE Bend 90° x 125mm c/w Door	SS316	125	121.08
CONTROLCETEE5M	Control CE Tee 125mm x 90° (No cap)	SS316	125	161.70
CEPIPECONMMX5	CE M To M Connector 120mm x 125mm	SS316	125	35.96
CONTROLCECAP5	Control CE Cap & Clamp 125mm	SS316	125	55.68
CEPIPE330X5TELE	CE Pipe 330mm x 125mm TELESCOPIC	SS316	125	72.98
CEBRACKET5	CE Wall Bracket 125mm	SS316	125	35.96

Vitreous Enamel Flue Pipe Ø150

Product Code	Description	Material	Ø mm	£
CEPIPE250X6	CE Pipe 250mm x 150mm	SS316	150	38.22
CEPIPE250X6DAMPER	CE Damper Pipe 250mm x 150mm	SS316	150	104.20
CEPIPE500X6	CE Pipe 500mm x 150mm	SS316	150	50.09
CEPIPE1000X6	CE Pipe 1000mm x 150mm	SS316	150	77.04
CEPIPE500X6WD	CE Pipe 500mm x 150mm c/w Door	SS316	150	94.14
CEPIPE1000X6WD	CE Pipe 1000mm x 150mm c/ w Door	SS316	150	123.39
CEBENDND45X6	CE Bend 45° x 150mm (No Door)	SS316	150	79.38
CEBENDWD45X6	CE Bend 45° x 150mm c/w Door	SS316	150	128.76
CEBENDND90X6	CE Bend 90° X 150mm (No Door)	SS316	150	79.53
CEBENDWD90X6	CE Bend 90° x 150mm c/w Door	SS316	150	128.76
CONTROLCETEE6M	Control CE Tee 150mm x 90° (No cap)	SS316	150	164.82
CONTROLCECAP6	Control CE Cap & Clamp 150mm	SS316	150	57.78
CEPIPE330X6TELE	CE Pipe 330mm x 150mm TELESCOPIC	SS316	150	78.99
CEBRACKET6	CE Wall Bracket 150mm	SS316	150	37.01

Stainless Steel Single Skin Flue Pipe – 25 1mm thickness



Stainless Steel Single Skin Flue Pipe Ø125

Product Code	Description	Material	Ø mm	£
CCSSFP1010SL125	SS 125 x 1000mm Straight Length	SS316	125	104.97
CCSSFP1010SLWD125	SS 125 x 1000mm Straight Length with door	SS316	125	115.46
CCSSFP480SL125	SS 125 x 500mm Straight Length	SS316	125	69.23
CCSSFP480SLWD125	SS 125 x 500mm Straight Length with door	SS316	125	79.76
CCSSFP45DE125	SS 125 x 45 Degree Elbow	SS316	125	79.80
CCSSFP90DE125	SS 125 x 90 Degree Elbow	SS316	125	83.07
CCSSFP90DAE125	SS 125 x 0–90 Degree Adjustable Elbow	SS316	125	109.82
CCSSFP90DT125	SS 125 x 90 Degree Tee	SS316	125	167.96
CCSSAP330D125	SS 125 x 330mm Adjustable Length	SS316	125	57.60
CCSSFPLB125	SS 125 x Locking Band	SS316	125	22.50

Stainless Steel Single Skin Flue Pipe Ø150

Product Code	Description	Material	Ø mm	£
CCSSFP1010SL150	SS 150 x 1000mm Straight Length	SS316	150	122.83
CCSSFP1010SLVD150	SS 150 x 1000mm Straight Length with door	SS316	150	131.21
CCSSFP480SL150	SS 150 x 500mm Straight Length	SS316	150	80.37
CCSSFP480SLVD150	SS 150 x 500mm Straight Length with door	SS316	150	87.11
CCSSFP45DE150	SS 150 x 45 Degree Elbow	SS316	150	72.39
CCSSFP90DE150	SS 150 x 90 Degree Elbow	SS316	150	89.00
CCSSFP90DAE150	SS 150 x 0–90 Degree Adjustable Elbow	SS316	150	110.21
CCSSFP90DT150	SS 150 x 90 Degree Tee	SS316	150	188.95
CCSSAP330D150	SS 150 x 330mm Adjustable Length	SS316	150	63.21
CCSSFPLB150	SS 150 x Locking Band	SS316	150	22.81

Sales: 01243 781 559

Dimensions given refer to internal diameter of pot or flue
All prices exclude VAT
Minimum carriage paid order £60



KAYSTED LTD

JUST LOOK AT THE BENEFITS OF A KAYSTED LTD TRADE ACCOUNT...

- 2% extra settlement discount for payment within 14 days
- Up to 60 days interest free credit
- Regular bulletins informing you of great offers and savings
- Dedicated Sales Manager responsible for your account

ACCOUNT APPLICATION FORM

Company Details

Company Name.....

Address.....

..... Time at Current Address

Telephone Fax.....

Accounts Contact..... Buyer

Company Registration Number..... Date Established

Company Type ☐ LTD ☐ Partnership* ☐ Sole Trader* ☐ Other (please state).....

*(If Partnership/Sole Trader please confirm full name) Date of birth / /

..... Date of birth / /

Business Type ☐ Builders Merchant ☐ Roofing Contractor ☐ Loft Convertor ☐ Builder

☐ Other (please state).....

Bank

Address.....

Account No:..... Requested Credit Limit £

Please ensure all details are complete and accompanied with either
a **compliment slip, letterhead or other means of identification.**

*Home Address

Applicant's Signature Name (in BLOCK LETTERS)

SUBJECT TO STATUS Date

About the Agreement

By signing this application, you confirm that:

- the details you have given are true and complete
- you have read and agreed to the Terms and Conditions of Sale of Kaysted Ltd.
- we will search the files of one or more credit reference agencies and keep a copy of the search

OFFICE USE ONLY

Account Number:.....

Approved Credit Limit:.....

Signed: MD CM

Dated:..... Dated:.....

ORIGIN LS ☐ MS ☐

Please return to: **Kaysted Ltd, Metro House,
Northgate, Chichester PO19 1BE**

Colt Cows

Chimneys Terminals Flues



Flexiwall and Turner & Wilson
are HETAS listed



Products CE marked
where applicable

**Call the Sales Team
now to place your order
or for more information**

**Trade Terms Booklet
available**

**Tel 01243 781 559
Fax 0870 241 1042**

**www.coltcowls.co.uk
Twitter @Coltcowls
Facebook.com/coltcowls
sales@coltcowls.co.uk**

**Chimney Cows Ltd
Metro House, Northgate
Chichester PO19 1BE**

Available from:

